

224/225 Base Actuator Assembly / Base Actuator Motor Installation [002-10093-00 / 002-10094-00]

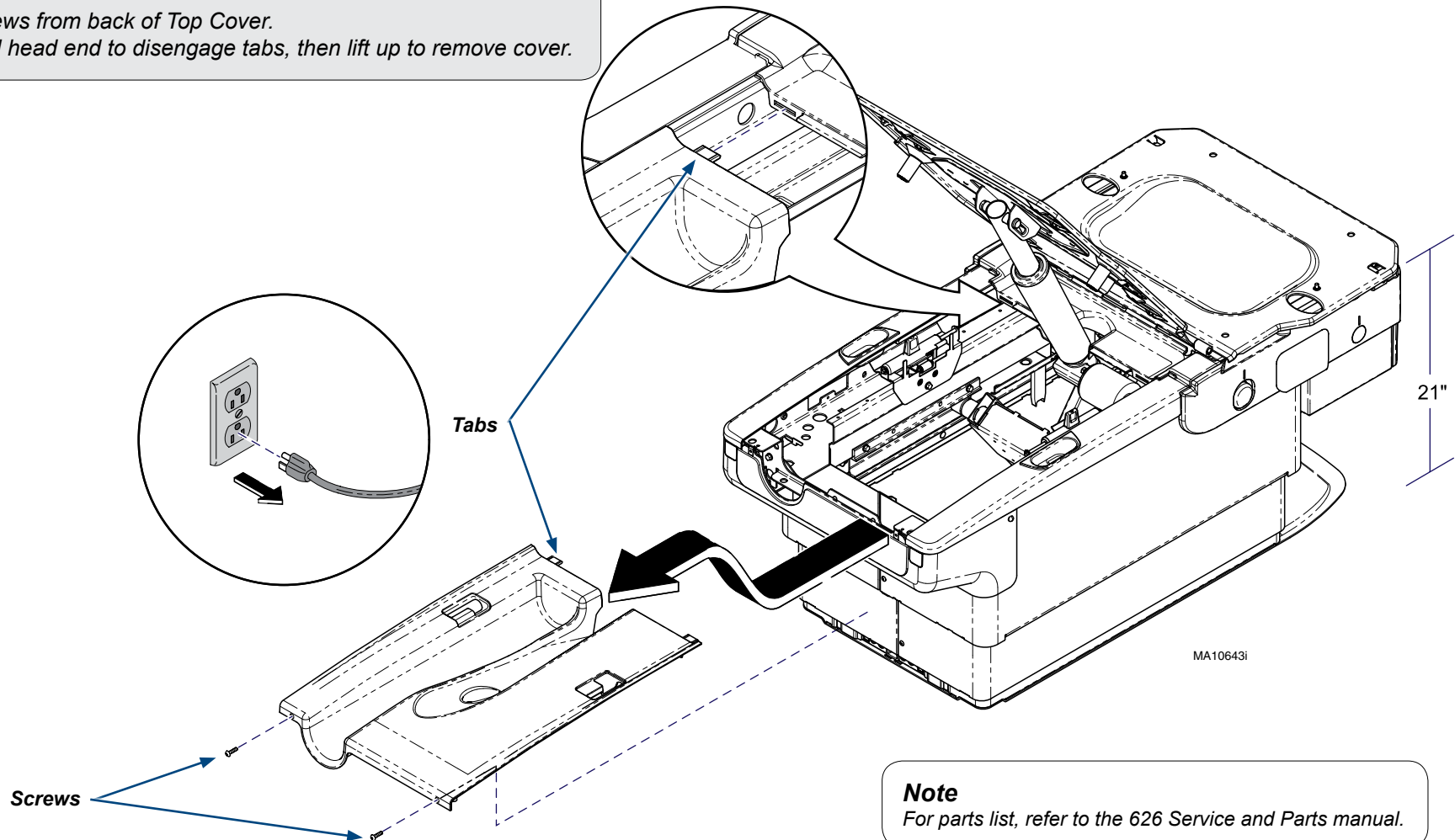


Caution

Always disconnect power to chair before removing covers or performing any service procedures.

Step 1: Remove Top Cover

- Position chair to approximately 21" from the top of chair frame to floor.
- Unplug chair.
- Remove two screws from back of Top Cover.
- Pull cover toward head end to disengage tabs, then lift up to remove cover.



Note

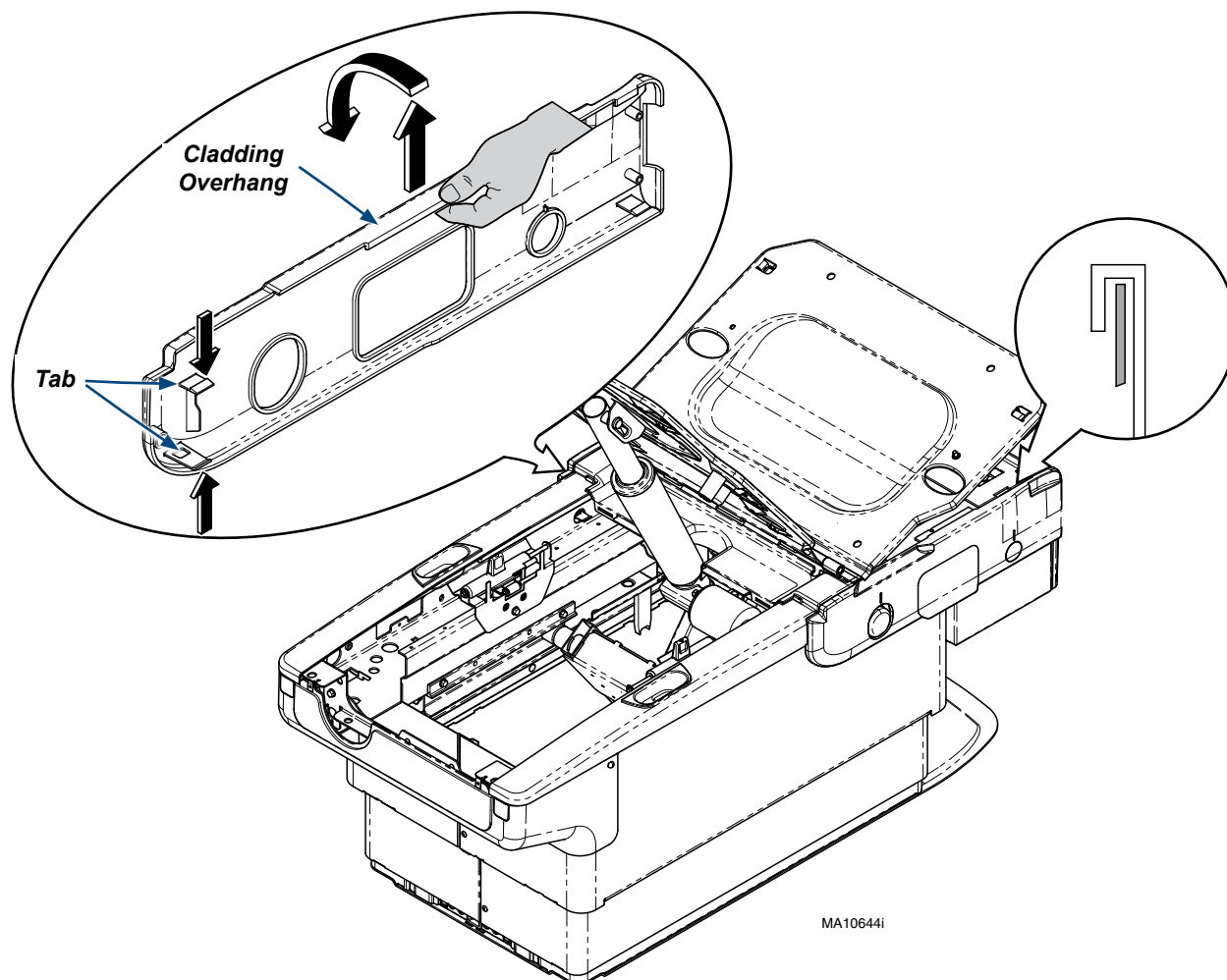
For parts list, refer to the 626 Service and Parts manual.

Note

Remove all accessories (ex. chair arms) before performing this procedure.

Step 2: Remove Side Cladding.

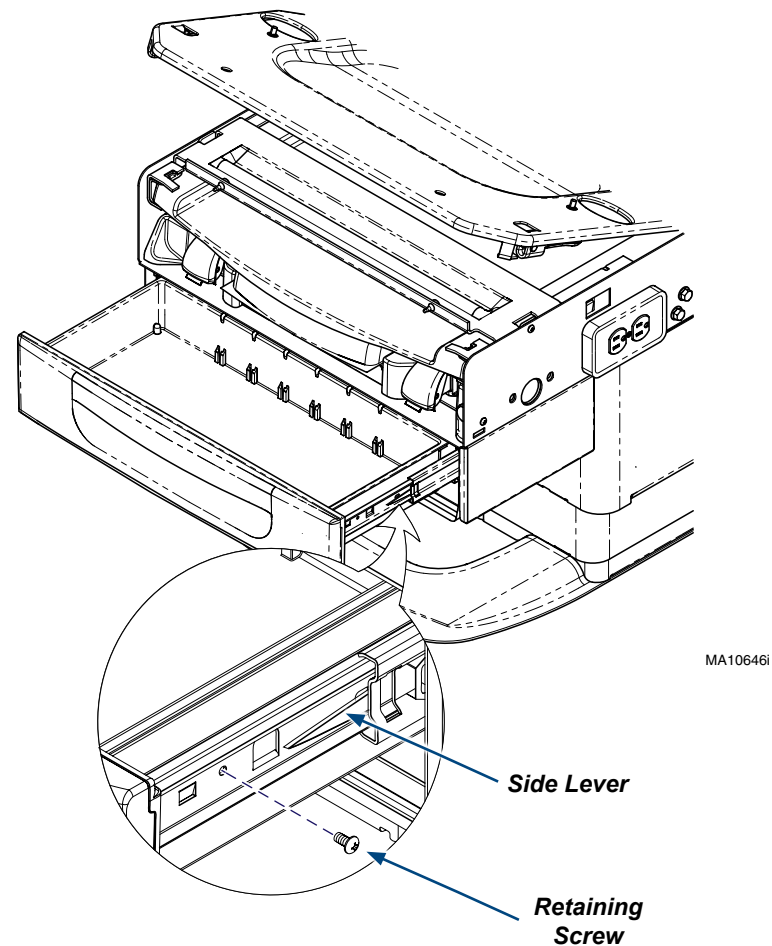
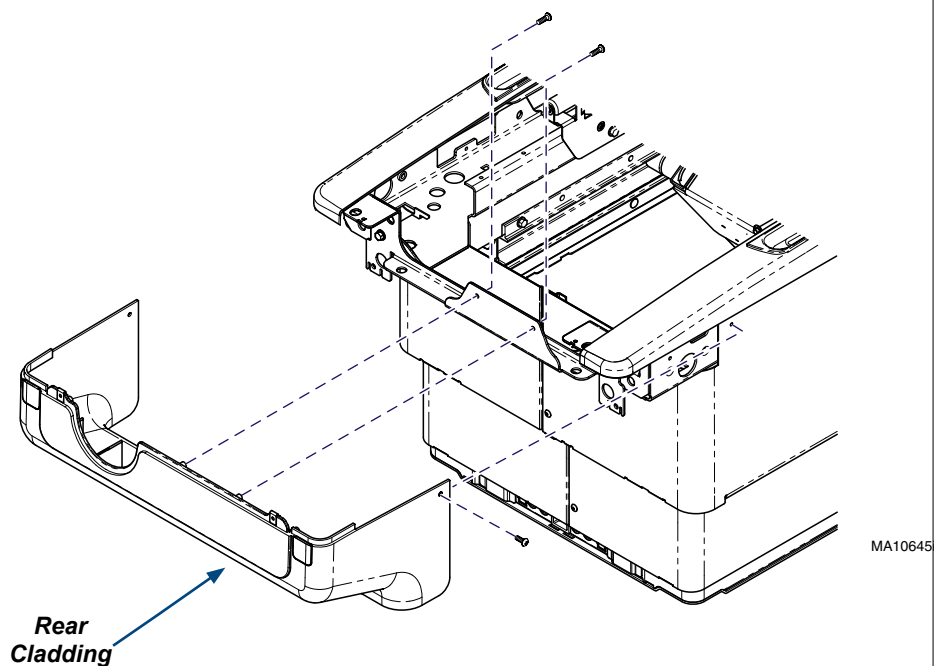
- A) Locate tabs inside at center of chair (footrest must be extended). Push down on top tab and up on bottom tab. Pull cladding away from chair.
- B) Pull up on Cladding overhang, and remove.
- C) Repeat process for opposite side.



MA10644i

Step 3: Remove Rear Cladding.

- A) Remove two screws from outside corners of Rear Cladding.
- B) Remove two screws from inside center of Rear Cladding.
- C) Remove Rear Cladding.



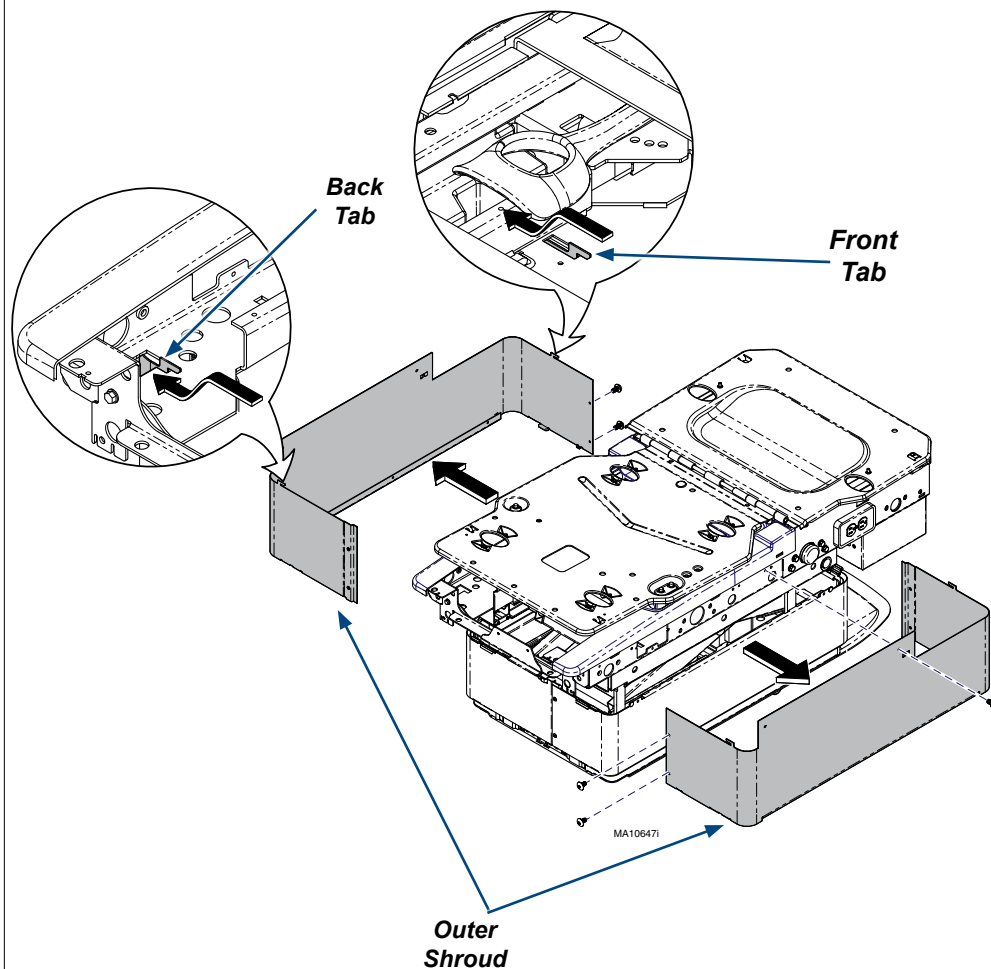
Step 4: Remove Front Drawer.

- A) Remove Retaining Screw. (located on one side only)
- B) Push LH side lever UP and RH side lever DOWN.
- C) Remove drawer by pulling straight out.

Note: Side levers are clear plastic.

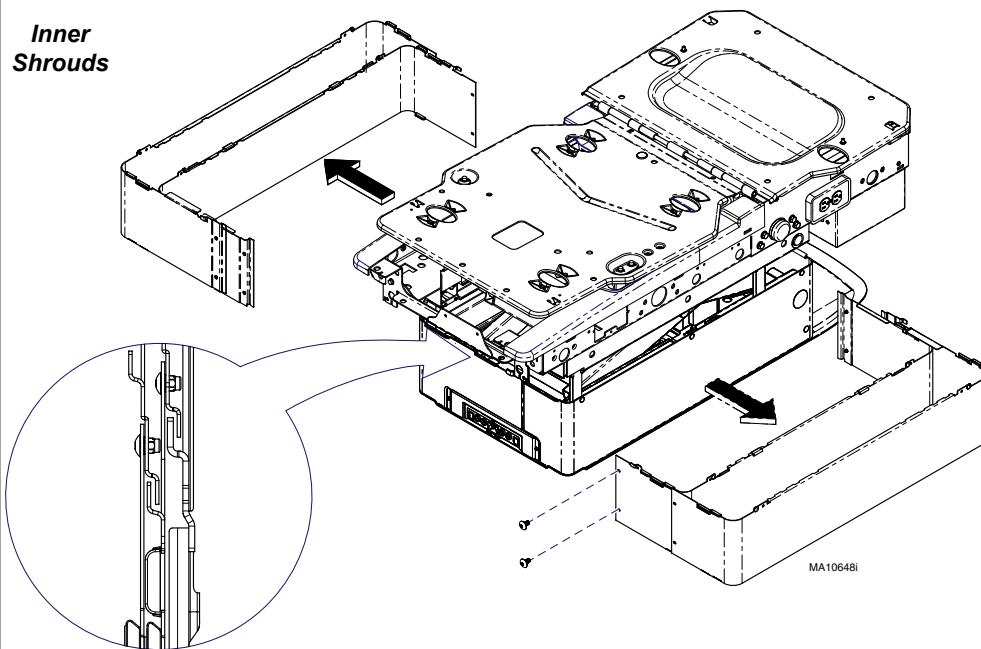
Step 5: Remove Outer Shroud.

- A) Remove screws from head-end & foot-end of Outer Shrouds.
- B) Remove screw from foot end side of Outer Shrouds.
- C) Pull Outer Shroud away from chair and lower the Tabs out of slots.
- D) Remove Outer Shroud, and repeat on opposite side.



Step 6: Remove Inner Shrouds.

- A) Remove screws from head-end & foot-end of Inner Shroud.
- B) Pull Inner Shroud away from chair to Remove. Repeat on remaining Shrouds.

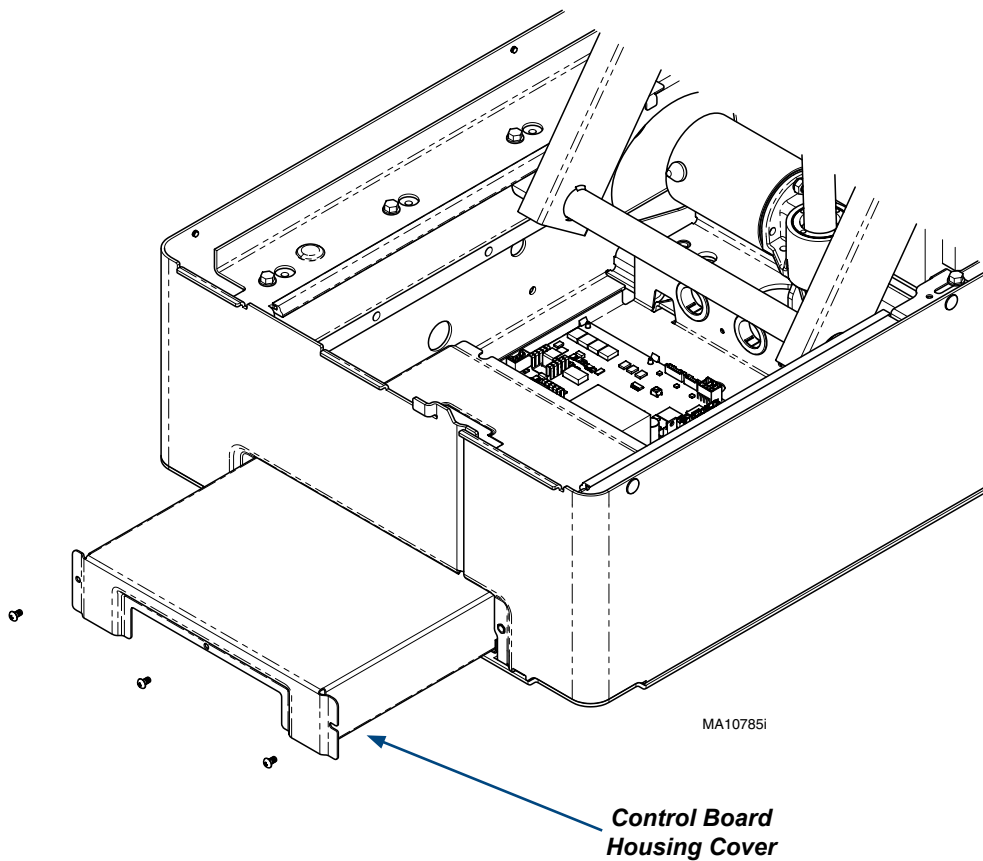


Equipment Alert

If the chair is at a height where the inner shrouds are being lifted/supported by the outer shroud, care must be taken to secure the inner shrouds while removing the outer shrouds.

Step 7: Partially Remove Control Board Housing Cover.

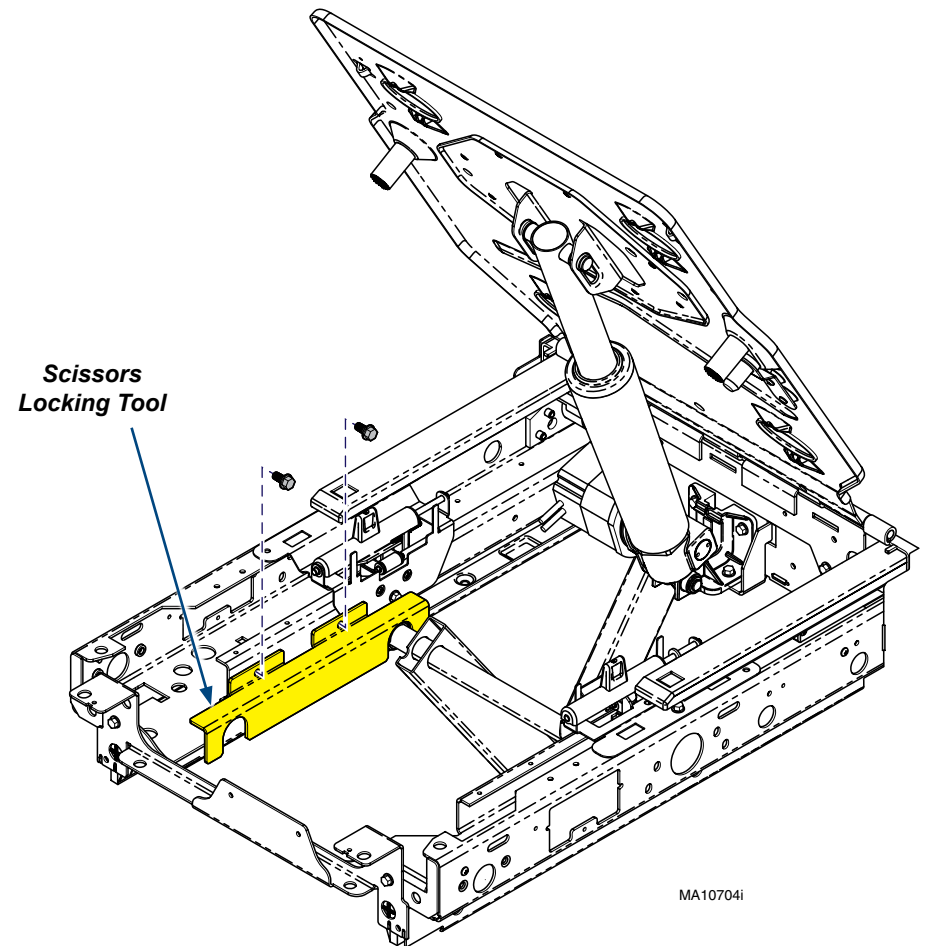
- A) Remove three screws from Control Board Housing Cover and slide halfway out to access base actuator motor wires.



Step 8: Install Scissors Locking Tool.

- A) Raise chair to almost full extension, Place Scissors Locking Tool as shown and secure with provided screws.

Note: Scissors Locking Tool can be installed into either side of the chair.



Equipment Alert

Failure to remove the Scissors Locking Tool after Base Actuator Repair could cause damage to the chair.

Actuator Replacement...



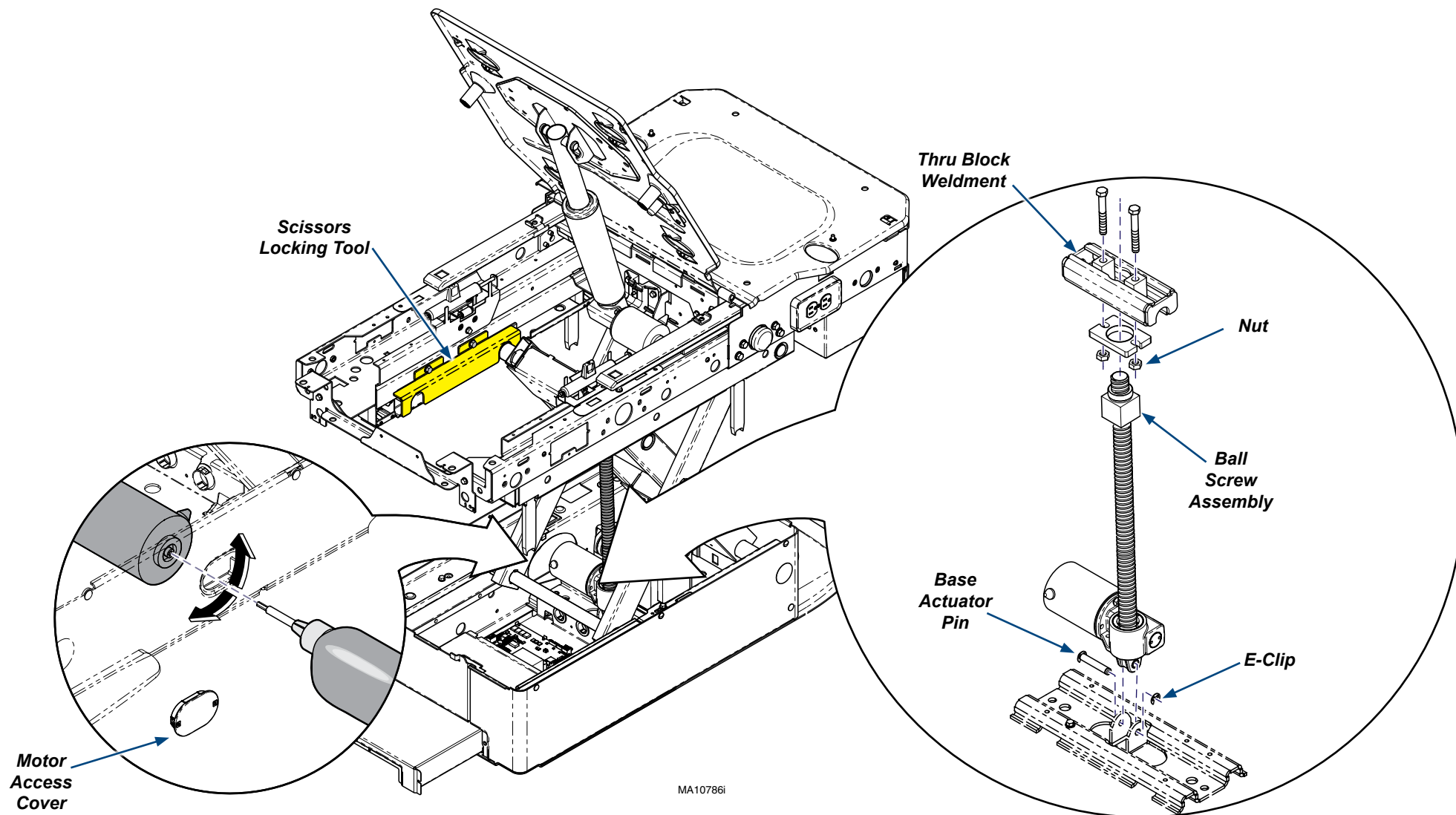
Equipment Alert

Do not move chair past limit switches or equipment could be damage.

Step 9: Remove Base Actuator.

- A) Remove two bolts from Thru Block Weldment.
- B) Lower Ball Screw Assembly by using the base lower function, or manually running the motor clockwise.
- C) Remove one E-Clip and base actuator pin.
- D) Disconnect wires and grounding bracket. Remove Base Actuator.
- E) If replacing just the motor proceed to step 10 if replacing the entire actuator assembly proceed to step 11.

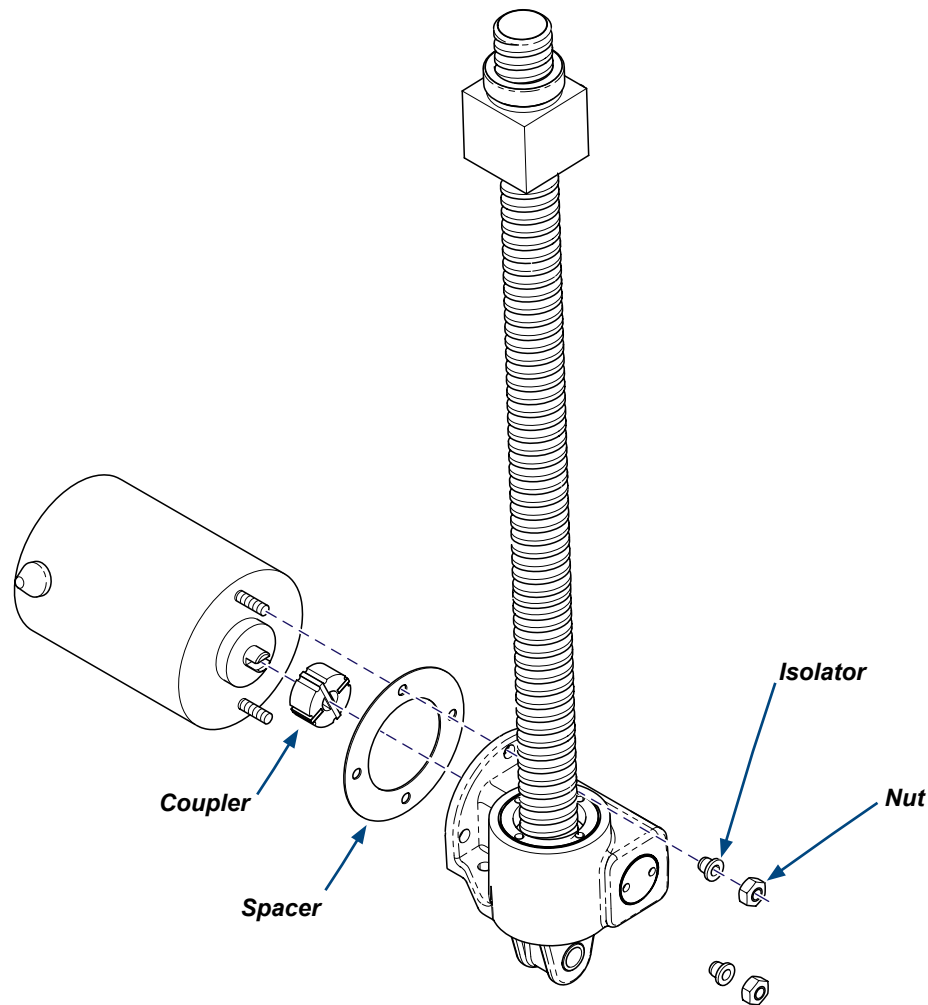
Note: The Base Actuator can be raised and lowered by removing the Motor Access Cover and using a drill, 3/16 allen bit and extension. Reverse (CCW) to raise actuator. Forward (CW) to lower actuator.



Motor Replacement...

Step 10: Replace Base Actuator Motor.

- A) Remove motor from actuator by removing two Nuts, and Isolators.
- B) Align Coupler, install new motor, reuse Spacer and two Isolators.
- C) Install new Nuts and tighten.



MA10836i

Reassembly



Equipment Alert

Make sure the arrows on the Thru Block Weldment are pointing upward when installing the base actuator or the base will not lower properly.



Equipment Alert

The Ball Screw Assembly Tube must be installed with the Tube facing the foot end of the chair.



Equipment Alert

Failure to remove the Scissors Locking Tool after Base Actuator Repair could cause damage to the chair.

Control Board Housing Cover

Scissors Locking Tool

Thru Block Weldment

Base Actuator Pin

Ball Screw Assembly Tube

View From Foot End

MA10835i

Step 9: Reassemble Chair with New Base Actuator/Motor (Reverse Order).

- Install Base Actuator and secure with Base Actuator Pin and E-Clip. Connect motor wires and grounding bracket.
- Rotate Ball Screw Assembly so that the tube faces the foot end of the chair, and raise using the base up function, or manually running the motor counter clockwise.
- Secure Ball Screw Assembly to the Thru Block Weldment with the two bolts.
- Remove two bolts holding the Scissors Locking Tool in place and remove.
- Install Inner & Outer Shrouds, Control Board Housing Cover and the Drawer.
- Install Rear Cladding, Side Cladding and Top Cover.